

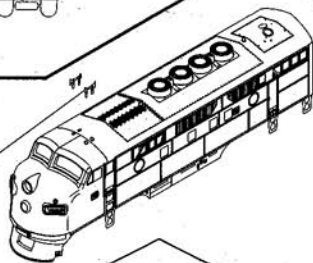
INSTRUCTIONS :

934056
NUMBER BOARDS FOR F-UNIT



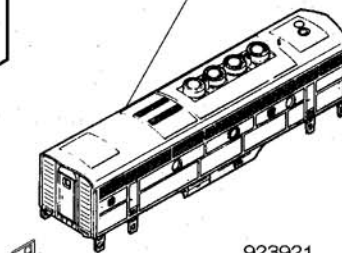
1 CHIME AIRHORN
920021 BLACK
920022 GRAY
920023 SILVER
920025 RED
920026 YELLOW
920028 WHITE

920101
F-UNIT GLASS SET, 2 HEADLIGHT



F3A PH2 BODYSHELL, 2 HL
921120 WITHOUT STEAM GENERATOR
921130 WITH STEAM GENERATOR

921150
F3B PH2 BODYSHELL, WITH
STEAM GENERATOR



923921
F-UNIT FLOORBOARD B UNIT

928052
CIRCUIT BOARD WITH AMBER LED LIGHT

926501
WORM GEAR SET FOR F-UNITS

926090
MOTOR FOR F-UNITS

923525
COUPLER COVER PLATE FOR F-UNIT REAR

923500
MAGNETIC KNUCKLE COUPLER, SHORT SHANK

923512
COUPLER TRIP PINS

923511
COIL CENTERING SPRING
(FOR TRUCK OR POCKET MOUNT)

F-UNIT REAR TRUCK
929311 BLACK
929313 SILVER

F-UNIT FUEL TANK
924151 BLACK
924152 GRAY
924153 SILVER

923911
F-UNIT FLOORBOARD A UNIT

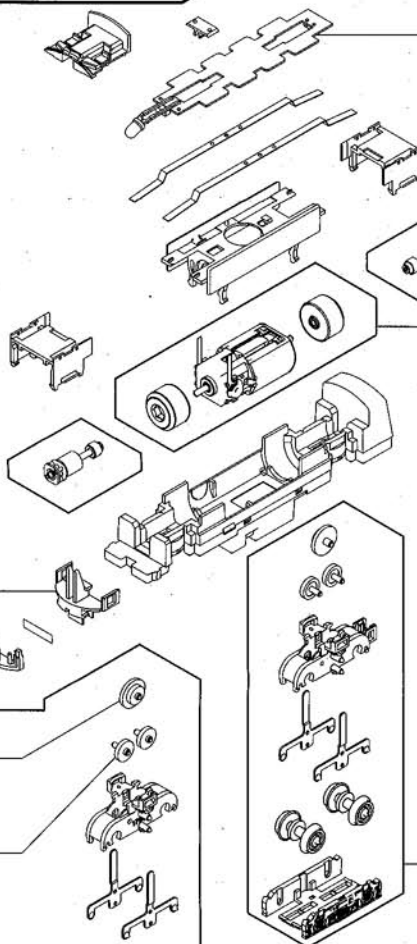
923521
COUPLER CLIP FOR F-UNIT FRONT

930060
DOUBLE GEAR, VERSION 6

931050
IDLER GEAR, VERSION 5

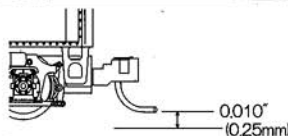
932090
GEARED WHEELSET, POINTED AXLE

F-UNIT FRONT TRUCK
929301 BLACK
929303 SILVER



Push straight leg of Pin into oval shaped hole in Knuckle, noting the fit of the flattened shape of the Trip Pin. The Pin should clear the top of the rail by 0.010" (0.25mm) to prevent its snagging on switchers or grade crossings.

*FULLY-AUTOMATIC MAGNETIC KNUCKLE COUPLER PAT.P



LIMITED WARRANTY

1. Max. Operational voltage: 12V DC
2. Additional lubrication at time of purchase is not recommended

KATO U.S.A., INC. warrants that this product will be free from defects in material and workmanship for a period of sixty (60) days from the date of purchase. If this product fails during the warranty period, carefully pack the assembled item in the original carton, together with the dated sales receipt, and return to: KATO U.S.A., INC., 100 Remington Road, Schaumburg, IL 60173. Defects due to misuse, improper maintenance and/or abuse are not covered by this warranty. Items that have been modified by the modeler or anyone other than an authorized KATO repair person are not covered by the warranty. This warranty gives you specific legal rights and you may also have other rights which vary from state to state.

ITEM#	DESCRIPTION	RETAIL PRICE	ITEM#	DESCRIPTION	RETAIL PRICE
920021	1 CHIME AIRHORN, BLACK, 2EA	\$1.00	923921	F-UNIT FLOORBOARD B UNIT	\$1.00
920022	1 CHIME AIRHORN, GRAY, 2EA	\$1.00	924151	F-UNIT FUEL TANK, BLACK	\$2.00
920023	1 CHIME AIRHORN, SILVER, 2EA	\$1.00	924152	F-UNIT FUEL TANK, GRAY	\$2.00
920025	1 CHIME AIRHORN, RED, 2EA	\$1.00	924153	F-UNIT FUEL TANK, SILVER	\$2.00
920026	1 CHIME AIRHORN, YELLOW, 2EA	\$1.00	925180	F-UNIT MECHANISM (A-UNIT)	\$50.00
920028	1 CHIME AIRHORN, WHITE, 2EA	\$1.00	925190	F-UNIT MECHANISM (B-UNIT)	\$50.00
920101	F-UNIT GLASS SET, 2 HEADLIGHT	\$4.00	926090	MOTOR FOR F-UNITS	\$26.00
921120	F3A PH2 BODYSHELL, 2 HL, WITHOUT STEAM GENERATOR	\$25.00	926501	WORM GEAR SET FOR F-UNITS	\$4.00
921130	F3A PH2 BODYSHELL, 2 HL, WITH STEAM GENERATOR	\$25.00	928052	CIRCUIT BOARD WITH AMBER LED LIGHT	\$6.00
921150	F3B PH2 BODYSHELL, WITH STEAM GENERATOR	\$25.00	929301	F-UNIT FRONT TRUCK, BLACK	\$10.00
923500	MAGNETIC KNUCKLE COUPLER, SHORT SHANK, 8EA	\$2.00	929303	F-UNIT FRONT TRUCK, SILVER	\$10.00
923510	FLAT CENTERING SPRING (FOR CLIP MOUNT), 8EA	\$1.00	929311	F-UNIT REAR TRUCK, BLACK	\$10.00
923511	COIL CENTERING SPRING (FOR TRUCK OR POCKET MOUNT), 8EA	\$1.00	929313	F-UNIT REAR TRUCK, SILVER	\$10.00
923512	COUPLER TRIP PINS, 8EA	\$1.00	930060	DOUBLE GEAR, VERSION 6, 4EA	\$2.00
923521	COUPLER CLIP FOR F-UNIT FRONT, 4EA	\$1.50	931050	IDLER GEAR, VERSION 5, 4EA	\$2.00
923525	COUPLER COVER PLATE FOR F-UNIT REAR, 4EA	\$1.50	932090	GEARED WHEELSET, POINTED AXLE, 6EA	\$9.00
923911	F-UNIT FLOORBOARD A UNIT	\$1.00	934056	NUMBER BOARDS FOR F-UNIT	\$1.00

Price and Availability Subject to Change Without Notice.
Parts May Also be Available at Your Local Hobby Dealer.
General Questions and Foreign Orders 847-781-9500.
Check Here if Color Substitutions are Acceptable if Selected Color
Choice is not Available ☐

PARTS MAY BE ORDERED ONLINE AT www.katousa.com

ORDERED BY: Hours: Mon-Fri 9:00 a.m. to 12:00 p.m. or 1:00 p.m. to 4:00 p.m. CST (Except Holidays)

Name		
Address		Phone
City	State	Zip
Daytime Phone Number Area Code()		

SHIP TO:

Name		
Address		Phone
City	State	Zip

METHOD OF PAYMENT (U.S. Funds Only)

☐ Check ☐ Money Order ☐ Mastercard ☐ VISA
(Allow two weeks for check clearance)

Credit Card Number	Expiration Date
Signature	3 Digit Code Number from Card Back

[illegible]